



# PIU FACTS

Institutional Effectiveness Publication

May 2015, Number 4

## 2010, 2012 & 2014 Alumni Survey Result

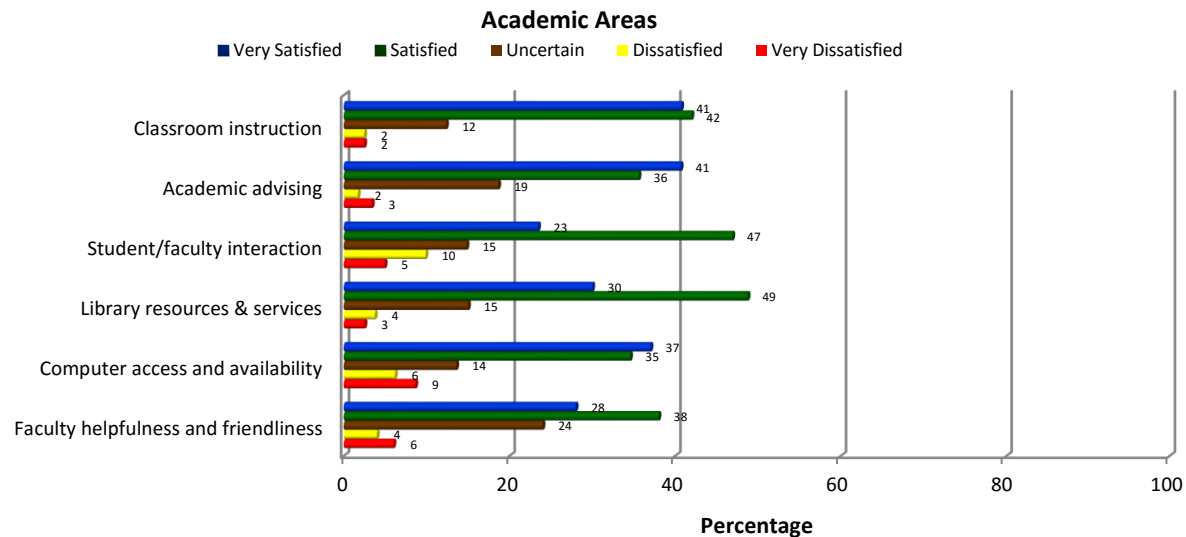
Survey Respondents: **82**

### I. Experiences at PIU

#### a. Academic Areas

	(N)	Very Satisfied (5)	Satisfied (4)	Uncertain (3)	Dissatisfied (2)	Very Dissatisfied (1)	Average
1. Classroom instruction	81	41%	42%	12%	2%	2%	4.2
2. Academic advising	59	41%	36%	19%	2%	3%	4.1
3. Student/faculty interaction	81	23%	47%	15%	10%	5%	3.7
4. Library resources & services	80	30%	49%	15%	4%	3%	4.0
5. Computer access and availability	81	37%	35%	14%	6%	9%	3.9
6. Faculty helpfulness and friendliness*	50	28%	38%	24%	4%	6%	

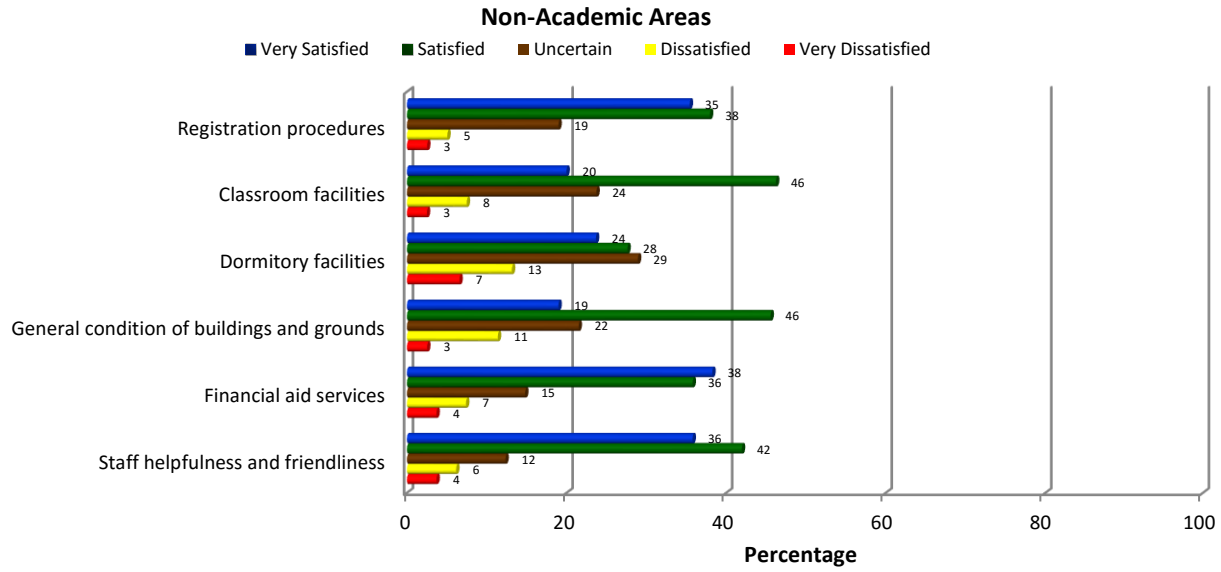
\* - added in 2012 alumni survey



#### b. Non-Academic Areas

	(N)	Very Satisfied (5)	Satisfied (4)	Uncertain (3)	Dissatisfied (2)	Very Dissatisfied (1)	Average
1. Registration procedures	79	35%	38%	19%	5%	3%	4.0
2. Classroom facilities	80	20%	46%	24%	8%	3%	3.7
3. Dormitory facilities	76	24%	28%	29%	13%	7%	3.5
4. General condition of buildings and grounds	79	19%	46%	22%	11%	3%	3.7
5. Financial aid services	81	38%	36%	15%	7%	4%	4.0
6. Staff helpfulness and friendliness	81	36%	42%	12%	6%	4%	4.0

## 2010, 2012 & 2014 Alumni Survey Result



### c. Campus Life

1. Sense of spiritual belonging
2. Sense of personal safety on campus
3. Sense of acceptance of my culture
4. Sense of acceptance of other cultures
5. Student input was valued
7. Campus was generally free from racial discrimination

	Very Satisfied (N)	Satisfied (5)	Uncertain (4)	Dissatisfied (3)	Very Dissatisfied (2)	Average
1. Sense of spiritual belonging	81	27%	40%	25%	5%	3.8
2. Sense of personal safety on campus	81	31%	41%	16%	9%	3.9
3. Sense of acceptance of my culture	79	27%	37%	15%	14%	3.6
4. Sense of acceptance of other cultures	80	21%	45%	19%	10%	3.7
5. Student input was valued	81	21%	37%	20%	15%	3.5
7. Campus was generally free from racial discrimination	80	25%	24%	25%	15%	3.4

